



**FIRST CANADIAN
GRAPHITE**

**ADVANCING NORTH AMERICA'S
CRITICAL MINERAL**

FIRSTCANADIANGRAPHITE.COM

TSX.V: FCI | OTC: GBMIF

March 11, 2026

FORWARD LOOKING STATEMENTS - DISCLAIMER



Except for historical information, this presentation may contain certain “forward-looking” statements and information relating to First Canadian Graphite Inc. that are based on the beliefs of First Canadian Graphite Inc. management, as well as assumptions made by and information currently available to First Canadian Graphite Inc. management. Such statements reflect the current risks, uncertainties and assumptions related to certain factors including but not limited to, without limitations, exploration and development risks, expenditure and financing requirements, title matters, operating hazards, metal prices, political and economic factors, competitive factors, general economic conditions, relationships with vendors and strategic partners, governmental regulation and supervision, seasonality, technological change, industry practices, and one-time events. Should any one or more risks or uncertainties materialize or change, or should any underlying assumptions prove incorrect, actual results and forward-looking statements may vary materially from those described herein. First Canadian Graphite Inc. does not assume the obligation to update any forward-looking statement. The factors that could cause actual results to differ materially include, but are not limited to, the following: general economic conditions; changes in financial markets; the impact of exchange rates; political conditions and developments in countries in which the Company operates; changes in the supply, demand and pricing of the metal commodities which the Company mines or hopes to find and successfully mine; changes in regulatory requirements impacting the Company’s operations; the ability to properly and efficiently staff the Company’s operations; the sufficiency of current working capital and the estimated cost and availability of funding for the continued exploration and development of the Company’s exploration properties. This list is not exhaustive and these and other factors should be considered carefully, and readers should not place undue reliance on the Company’s forward-looking statements. As a result of the foregoing and other factors, no assurance can be given as to any such future results, levels of activity or achievements and neither the Company nor any other person assumes responsibility for the accuracy and completeness of these forward-looking statements. The Mason Graphite NI 43-101 mineral resource estimate and other information was sourced from the Mason Graphite news releases. The Qualified Person did not verify the information contained within the Mason Graphite news release and the mineralization on the Mason Graphite property is not necessarily indicative of the mineralization on the Company’s property.

Qualified Person: Antoine Fournier (P.Geo) is a Qualified Person ("QP") as defined by National Instrument 43-101 guidelines, and he has reviewed and approved the technical content of this presentation.



WHY FIRST CANADIAN GRAPHITE INC.

1. **District-Scale Graphite Project totalling 16,704 ha (167.04 km²); the largest claimholder in the Tétépisca region, Quebec, Canada.**
2. **2026 Activity: Helicopter-borne geophysical surveys, drilling and exploration, environmental assessment and initiating a PEA**
3. **NI 43-101 resource averaging ~17% Cg with 3.2 Mt indicated & inferred graphite (Updating in 2026).**
4. **High-grade large and jumbo flake graphite, among the highest quality globally**
5. **Adjacent to a \$3.6B NPV graphite project, confirming district-scale potential**
6. **Excellent infrastructure: road access, nearby deep-sea ports, grid power**
7. **Mining-friendly Québec jurisdiction**
8. **Expanded drill program scheduled for late spring (2026) for resource expansion.**





Share Structure



TSX-V: FCI

Shares Outstanding	44,691,900
--------------------	------------

Options	2,560,300
---------	-----------

Warrants	27,833,693
----------	------------

Fully diluted	75,085,893
---------------	------------

As of Mar 11, 2026



OUR TEAM



Management & Directors

CEO: John LaGourgue

President: Tom Yingling

CFO: Binny Jassal

VP of Exploration: Antoine Fournier

Corporate Secretary: Shelley McDonald

Director: Florent Baril

Director: Mike Iverson

Legal Counsel

Fasken Martineau DuMoulin LLP: Frank Mariage

Advisors

Ian Graham

Dal Brynelsen

Scott Kelly

Malcom Bell

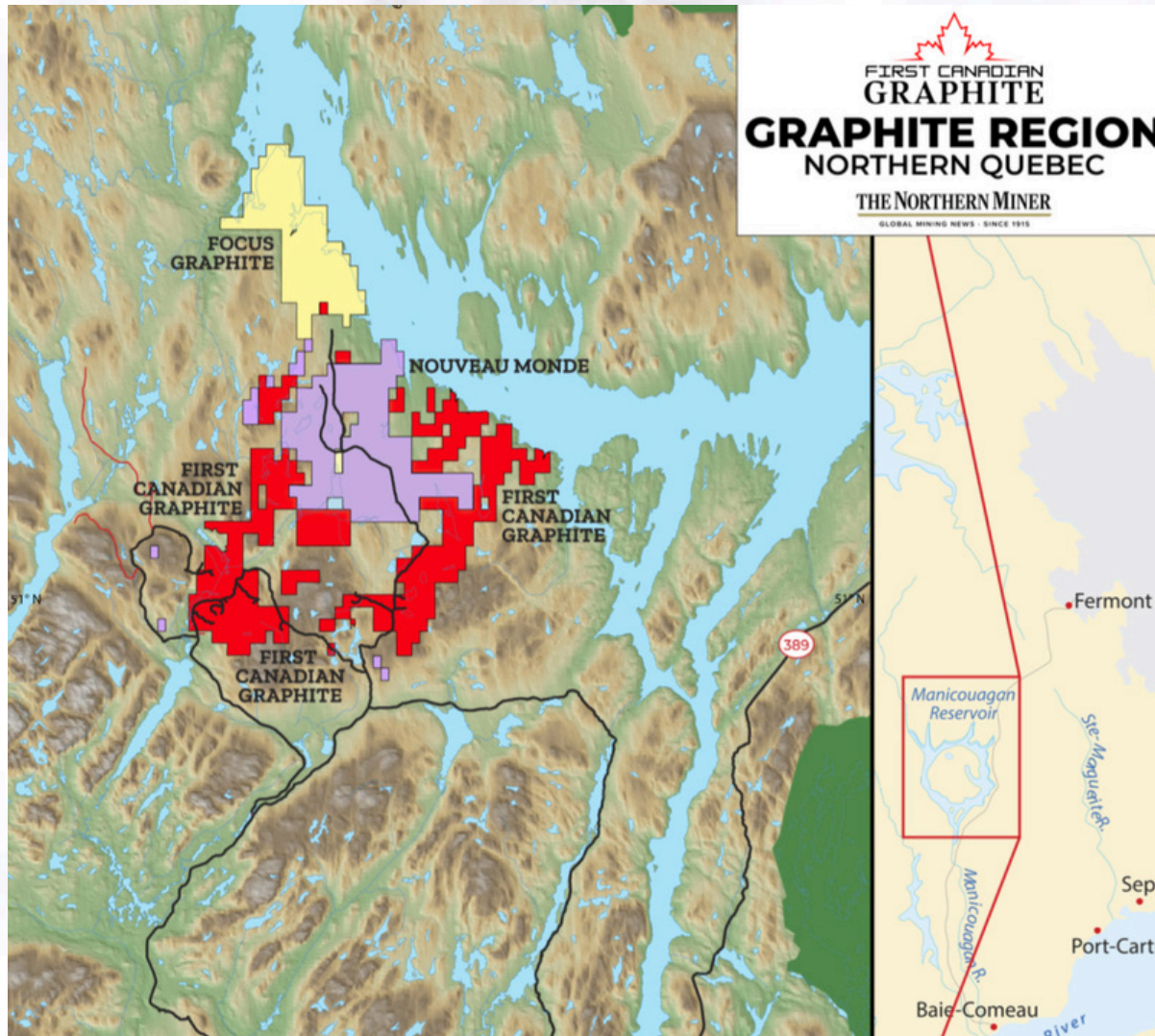
Michel Robert

Auditors

Smythe LLP



BERKWOOD GRAPHITE DISTRICT



Berkwood Graphite District

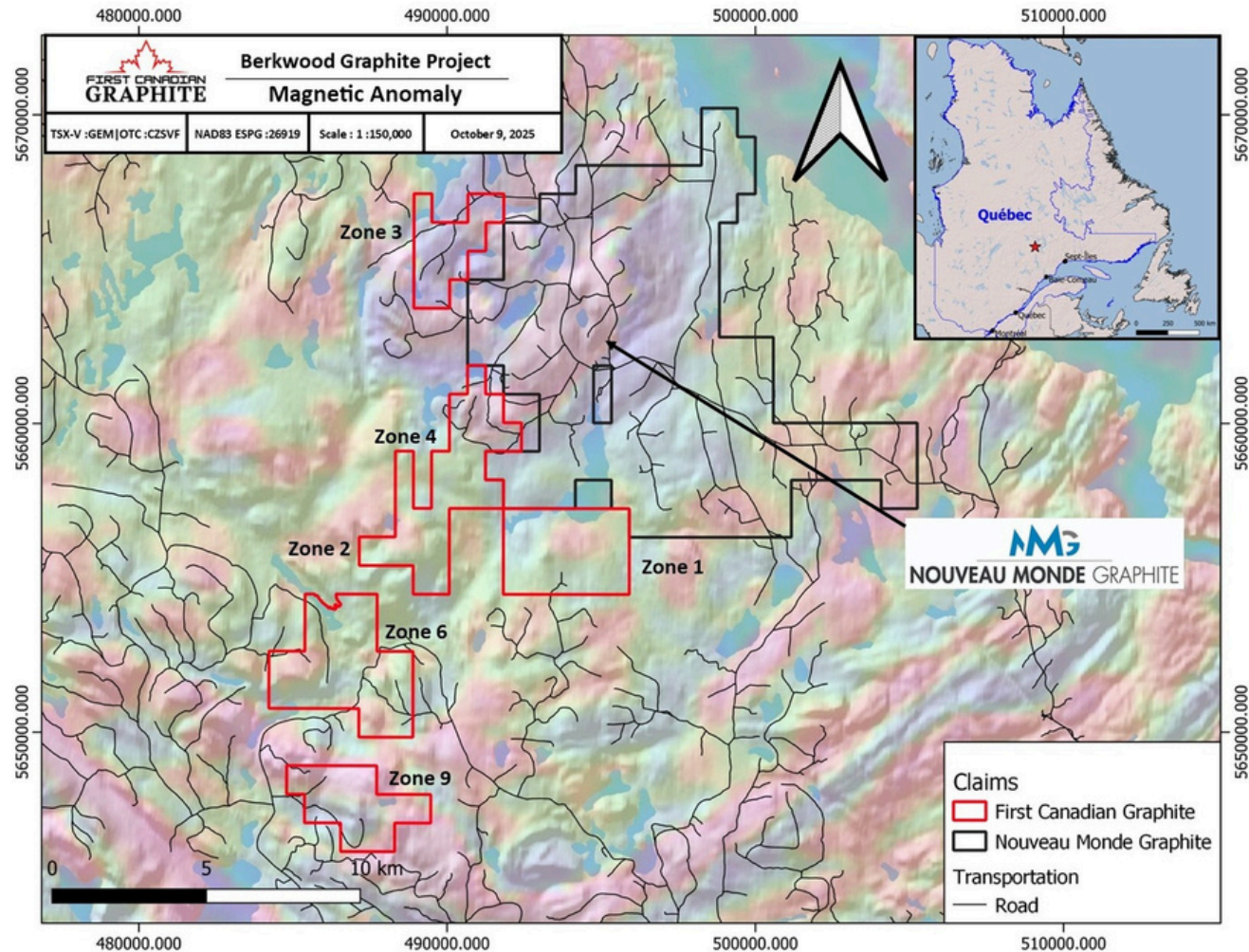
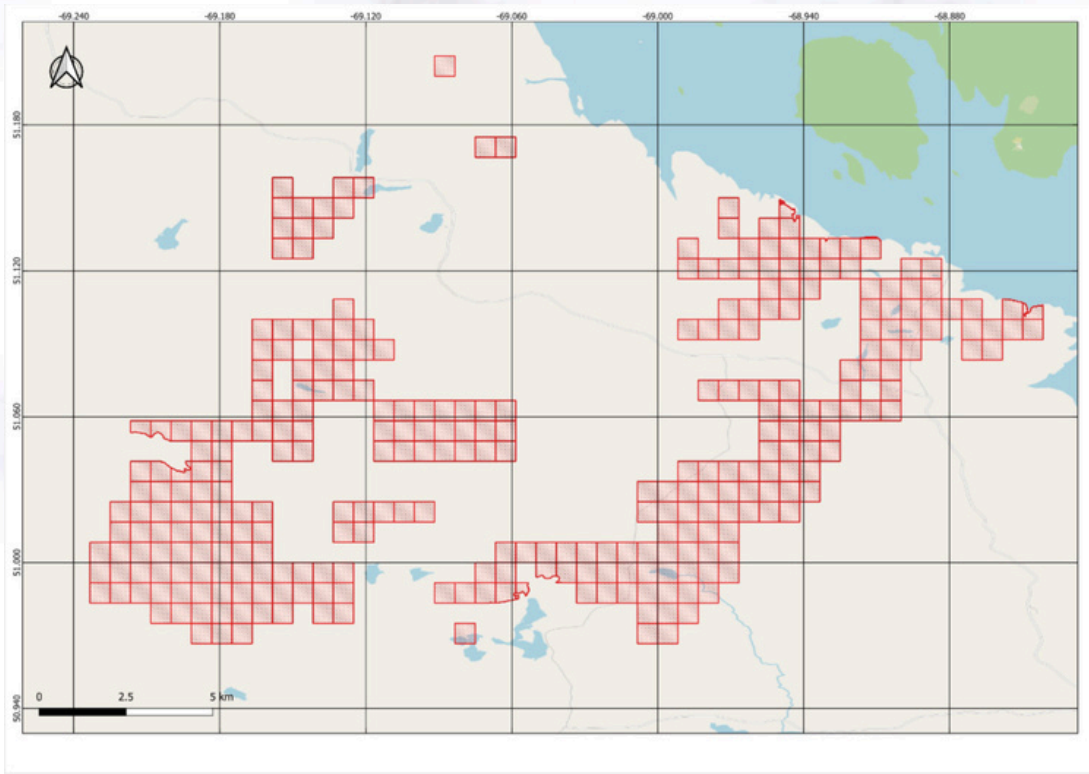
District-scale graphite project in Northern Québec covering 16,704 ha (167.04 km²), making FCI the largest claim holder in the Tétépisca region.

Less than 10% of the land package drilled and \$10 million spent, the project has already outlined a 3.2 Mt NI 43-101 indicated and inferred graphite resource. Substantial expansion upside.

The property shares claim boundaries with Nouveau Monde Graphite's \$3.6B NPV Uatnam Graphite Project, highlighting strong district-scale potential.



BERKWOOD GRAPHITE



NUMEROUS GRAPHITE OUTCROPS



Zone 1: Outcropping Graphite at surface



Zone 1: Channel sampling Graphite at surface 20% grade.



Zone 1: At surface graphite outcrops



Current & Future Plans 2026

Current Status:

- 12 separate zones totalling 16,704 ha (167.04 km²).
- Anomalies identified on every zone with electromagnetic (EM) surveys
- High-grade graphite confirmed at surface; road accessible
- Six drill programs completed on two zones
- Zone 1: Indicated & inferred 3.2 Mt NI 43-101 resource (Updating in 2026)
- Less than 10% of the land package drilled to date, leaving substantial upside
- Highly expandable resource potential



2026 Activity:

- Helicopter-borne geophysical surveys over the **(COMPLETE)**
- Exploration / drill program scheduled for late spring to accelerate resource expansion.
- Updated NI 43-101 resource estimate
- Environmental assessment, followed by a Preliminary Economic Assessment (PEA)



Ni 43-101 Resource Estimate



Ni 43-101 Drill Results

Multiple intersections show graphite grades over 30%, with an average of around 17%, making this one of the highest grade 43-101 graphite resources in the world.

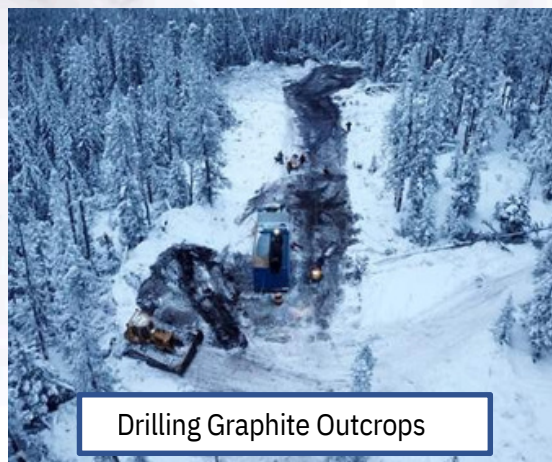
In-Pit Resource at Lac Gueret South (Berkwood Graphite Project)
(Rounded Numbers)

Current Resources (as of June 17th, 2019)

Minerals Resource Category	Tonnage (Mt)	Grade (%CGR)	Cgr (t)	Cut off
Indicated	1.76	17.0	299,200	6.81%
Inferred	1.53	16.4	250,200	6.81%



Sampling Graphite Outcrops



Drilling Graphite Outcrops



6 Drill programs core shed



Resource Estimate Reporting



Graphite Uses Ranked by Price per Tonne (Highest → Lowest)

1. Battery anode material (SPG / CSPG)

- US\$3,500–8,000+/t (processed, coated)
- Highest value use; dominates future demand growth

2. Graphene & ultra-high-purity specialty graphite

- US\$5,000–20,000+/t (small volumes)
- Niche, tech-driven, not bulk demand (yet)

3. Expandable graphite (fire retardants, insulation)

- US\$2,000–3,500/t
- Requires large + jumbo flake

4. High-end refractories & crucibles

- US\$1,500–2,500/t
- Premium industrial applications

5. Lubricants & specialty industrial uses

- US\$1,200–2,000/t

6. Carbon brushes & electrical components

- US\$1,000–1,800/t

Specialty & emerging uses

- Graphene production
- Nuclear moderators
- Water filtration
- Medical and high-tech composites

Graphite Uses Ranked by Global Demand today (Highest → Lowest)

1. Lithium-ion battery anodes

- ~50–55% of global graphite demand
- EVs, energy storage systems, consumer electronics
- Fastest-growing and most strategic use

2. Steelmaking & foundries (refractories, crucibles)

- ~30–35% of demand
- Essential for lining blast furnaces, ladles, and high-temperature applications
- Stable, long-term industrial demand

3. Expandable graphite (fire retardants & insulation)

- Used in fire-resistant building materials, foams, gaskets
- Growing due to stricter building and safety codes

4. Lubricants & greases

- Dry lubricants for machinery, automotive, aerospace
- Critical where oil-based lubricants fail (high temp, pressure)

5. Carbon brushes & electrical applications

- Motors, generators, wind turbines
- Smaller market but technically important



WE ARE IN A GROWING GRAPHITE MARKET

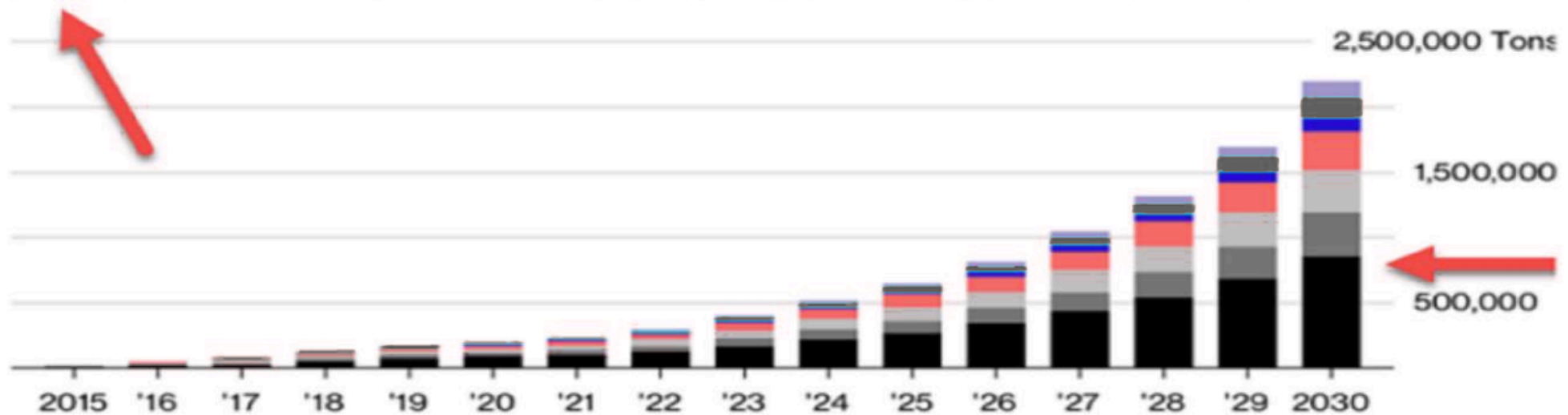
DEMAND FOR GRAPHITE IS GROWING

- EV DEMAND - 10 countries have mandated EV cars by 2030 to 2040
- SOLAR AND WIND FARMS - storing energy to sell at peak times
- HOME – batteries to store energy from solar roofs.

Metal Winners

Graphite demand is forecast to soar as electric vehicle market expands

■ Graphite ■ Nickel ■ Aluminum ■ Copper ■ Lithium ■ Cobalt ■ Manganese











Source: Bloomberg New Energy Finance

Bloomberg

NEW MINES NEEDED BY 2035



	2022 Supply	2035 Demand	Average Mine/Plant Size	No. of Mines/Plants Needed
Lithium 	678,000 t	4,000,000 t 3,322,000 t needed	 45,000 t	59
Cobalt 	177,000 t	489,000 t 312,000 t needed	 5,000 t	62
Natural Graphite 	1,110,000 t	7,210,000 t 6,100,000 t needed	 56,000 t	97
Synthetic Graphite 	2,100,000 t	5,200,000 t 3,100,000 t needed	 57,000 t	52

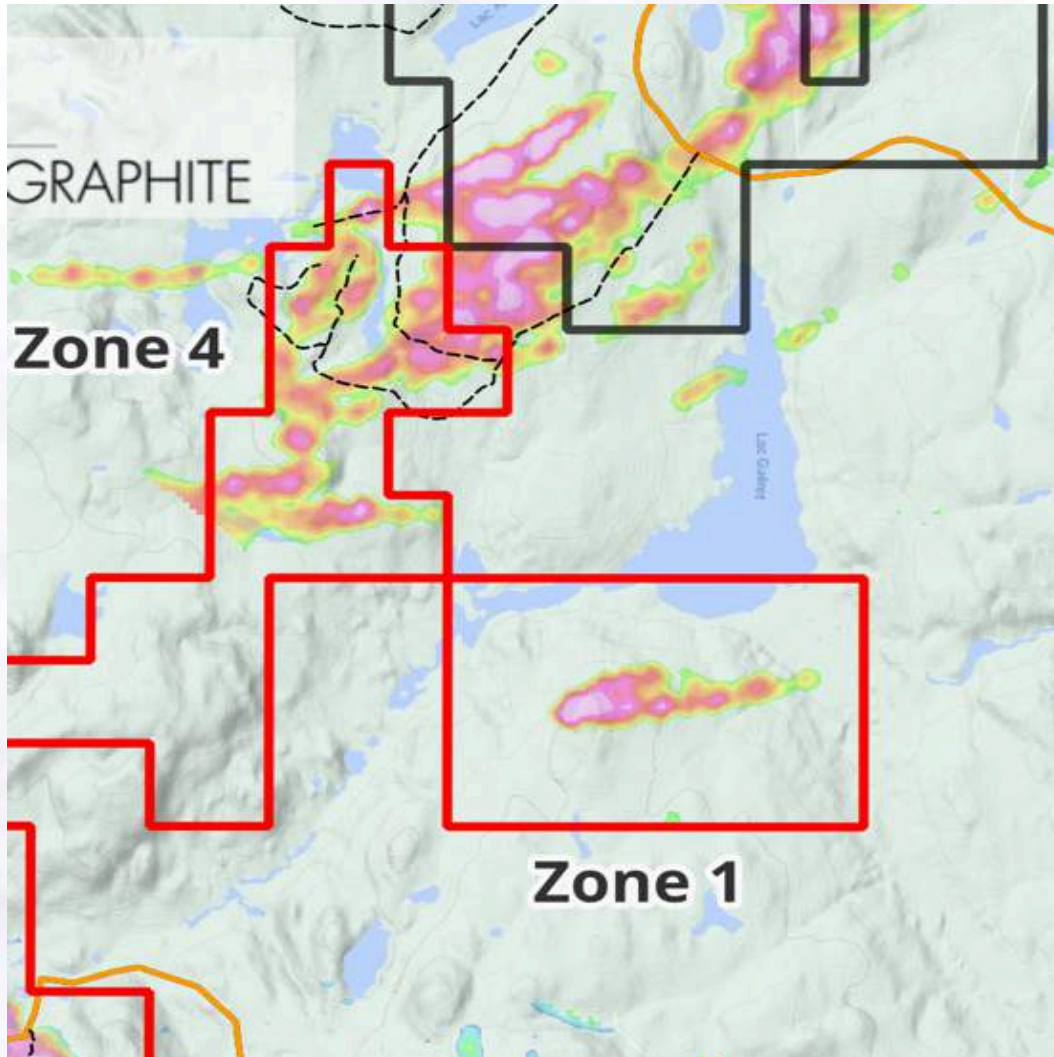
PROJECTED DEMAND REQUIRES

97

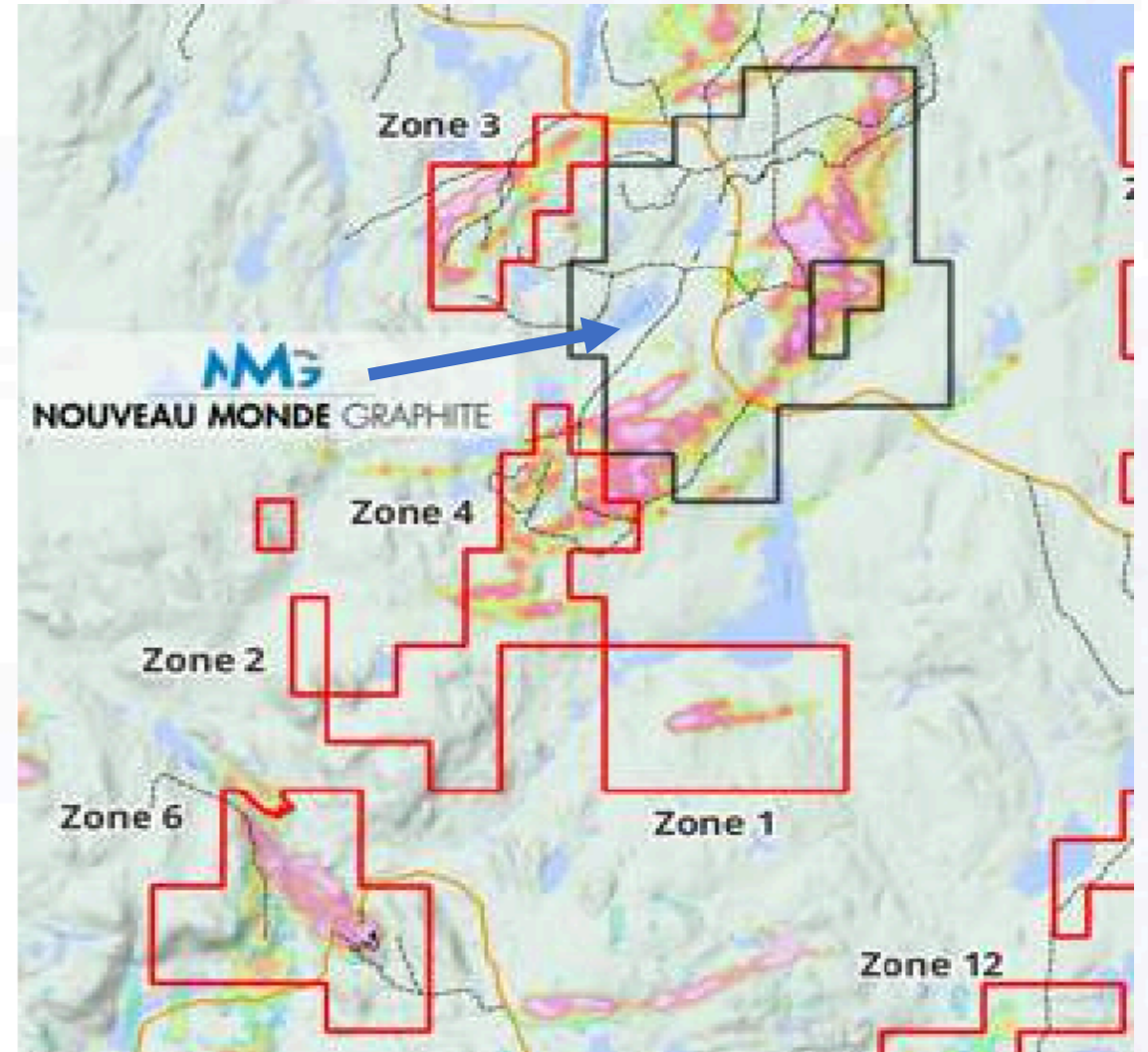
NEW GRAPHITE Mines needed by 2035 to meet the demand for battery anode materials

*Source: Benchmark Mineral Intelligence





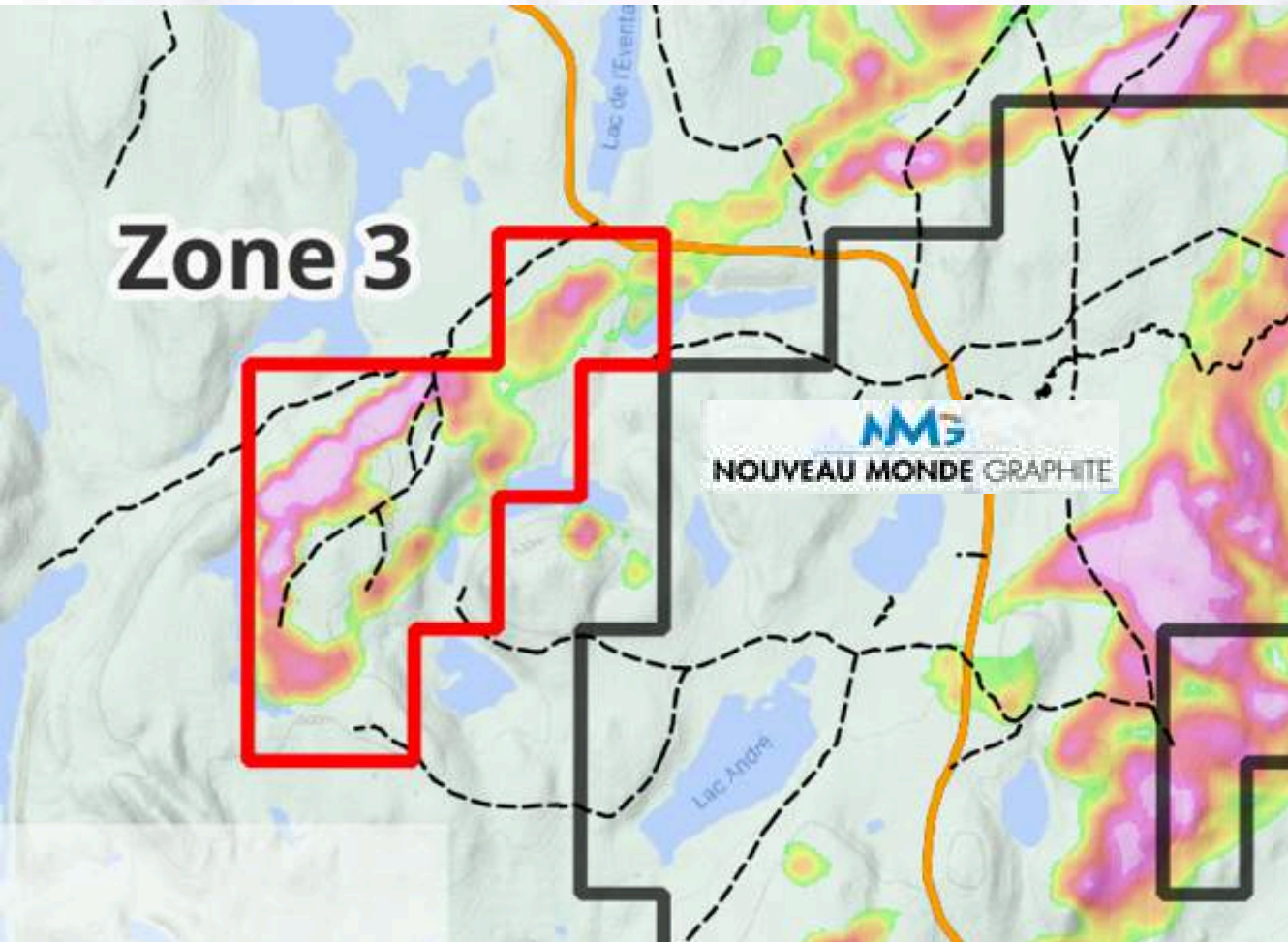
Each of the pink areas are geophysical anomalies all proven to contain graphite. To date, First Canadian Graphite's proven 3.2 million tonnes of indicated and inferred resource estimate has only been taken from Zone 1.



11 other zones that all contain geophysical anomalies already tested and proven to contain outcropping graphite. Most of these zones just need drilling which should easily expand the resource. These zones are all road accessible and drill ready. Zone 6 and 3 have historical drill data.



Substantial expansion upside: only 2 of 12 anomalies drilled, with high-grade graphite sampled across all properties.



Zone 3 Property - 2026 Milestones:

- Execute multi-zone drilling program across priority targets
- Deliver an updated NI 43-101 mineral resource estimate
- Advance environmental baseline studies
- Complete a Preliminary Economic Assessment (PEA)





High Quality Large to Jumbo Flake Graphite



97.8% from Metallurgical Testing

*See News Release Feb. 7th 2019: Berkwood metallurgical tests yield 97.8% graphite in concentrate grade

Classification	Size Fraction	Weight %	Cgr (%)
Very Coarse	20 x 50	39.5	97.6
Coarse	50 x 100	50.0	98.0
Fine	100 x 200	10.4	98.0
	Total	100.0	97.8

Average Distribution of Graphite

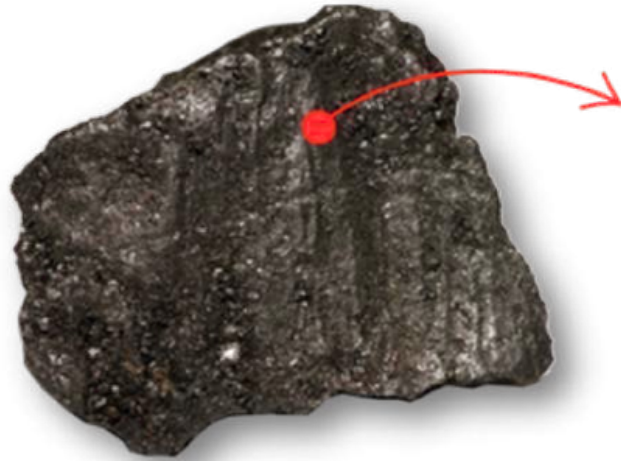
Size Range	Medium Cgr (6.81% - 15%)	High Cgr (15% - 35+%)
20 to 50 Mesh (Jumbo Flake)	51.30%	47.10%
50 to 100 Mesh (Large Flake)	28.70%	21.50%
Less than 100 Mesh (other)	20.10%	31.40%



*See News Release Mar. 8th 2018: Berkwood announces large flake characterization results at Lac Gueret Project Quebec



HIGH QUALITY = PREMIUM PRICE



FCI's resource shows predominantly large and jumbo size flakes making this one of the most versatile graphite properties

Our Graphite = High End Quality

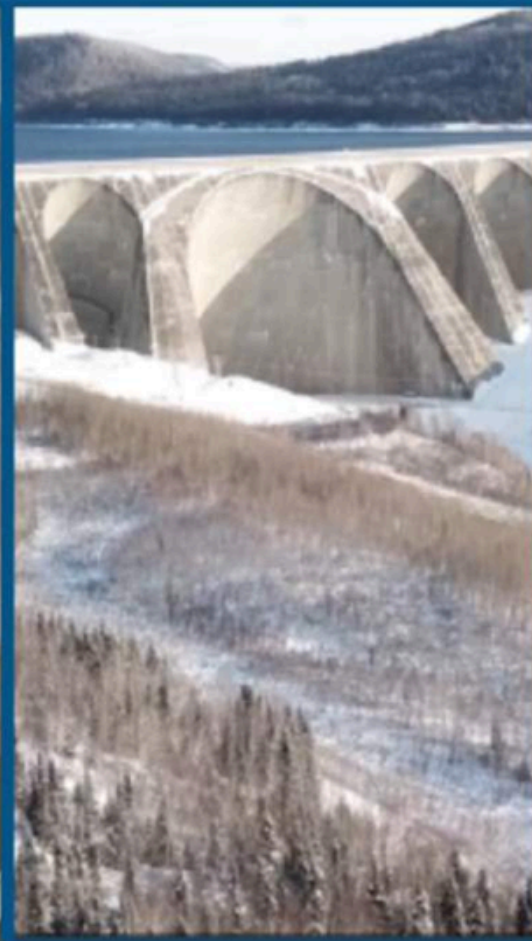
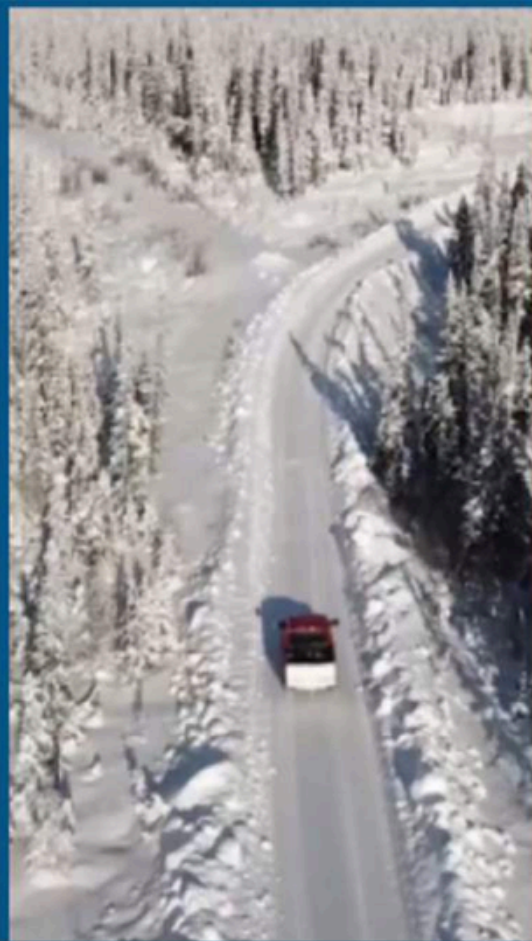
- **Natural:** Better conductivity than synthetic material High Grade: 17% average grade
- **Large/Jumbo Flake:** Has the highest conductivity as it is the most dense High Conductivity
- **Superior Crystallinity:** Improves the life of batteries
- **Easily Expandable:** Increases uses and value per tonne

Microns	Mesh Size	Purity	Market Terminology	Price/Tonne (US\$)
>300	+48	90 to 97%	Extra large or 'Jumbo' Flake	~ \$2,000
180 to 300	-48 to +80	90 to 97%	Large Flake	~ \$1,300
150 to 180	-80 to +100	90 to 97%	Medium Flake	~ \$1,100
75 to 150	-100 to +200	90 to 97%	Small Flake	~ \$750
<75	-200	80 to 85%	Fine Flake/Amorphous	~ \$450





PROXIMITY TO ALL ESSENTIAL INFRASTRUCTURE



Access to critical infrastructure translates into an enhanced margin profile while facilitating and accelerating operations



CONTACT

Montreal Office

Suite 2200 –1250 René Levesque Blvd.

Montreal, QC Canada H3B 4W8

Phone: (438) 469-0705

Vancouver Office

Suite 1100 –1111 Melville Street

Vancouver, B.C. V6E-3V6

Phone: (604) 343-7740



**FIRST CANADIAN
GRAPHITE**



firstcanadiangraphite.com